

# Still on Exchange Server 2010?



Support for Exchange 2010  
ends on **October 13, 2020**

**Velosio**<sup>®</sup>



# Time is running out. What will you do?

Mainstream support for Exchange 2010 ended in January 2015. Per standard practice, Microsoft extended support ends five years after mainstream. Now, you have less than a year left before extended support ends for this version of Exchange on October 13, 2020, a grace period Microsoft recently extended.

## **Severe Implications of End of Extended Support**

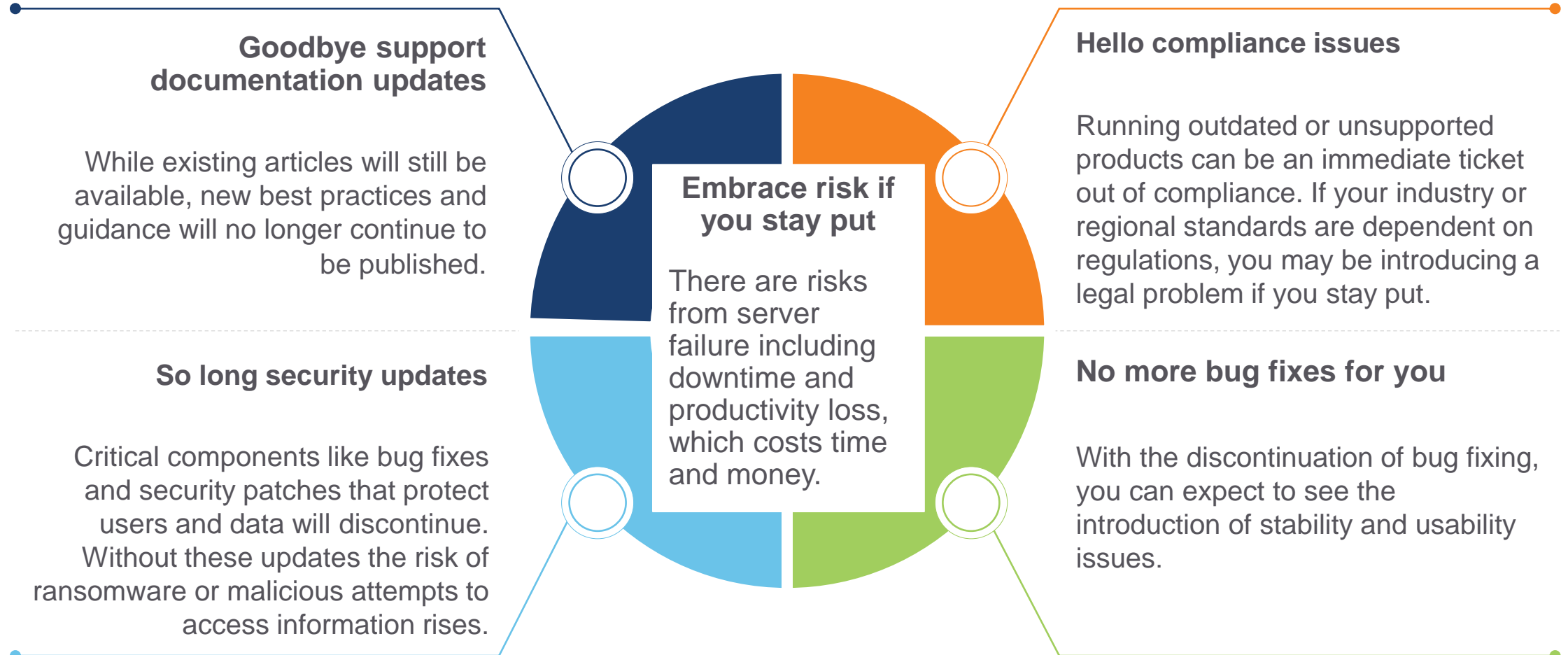
On October 13, 2020 there will be no further security or patches, fixes, or updates, no available support for Exchange Server 2010. Nothing. It all ends with the anticipation that users have already migrated to a more current platform.

Every hacker and other bad actor on the internet is aware of this end of support and knows your platform is vulnerable, painting a target on your back. After October 13, 2020, they will all go looking for those who are still using Exchange Server 2010.

## **So, What Can You Do to Protect Your Business?**

October may seem far off but being proactive can save you stress as you plan your migration from Exchange 2010 to either Office 365 or Exchange Server 2016. We will need to examine your retention policies to help you determine what older segment of your mail store will be archived and what segment will be migrated to the new platform. There are rights issues, governance issues, technical issues, and others which need to be discussed and planned for.

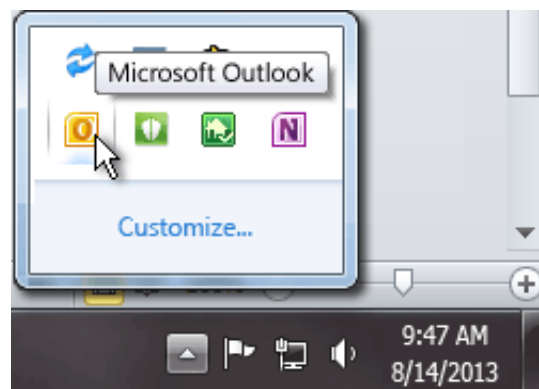
# End of Support Implications





# How to Determine Exchange Version

1. With Microsoft Outlook running, press and hold CTRL while you right-click the Outlook icon in the notification area, at the far right of the task bar:



2. Click **Connection Status**
3. Move the horizontal slider all the way to the right. Under the **Version** column heading, note the number that appears
4. Compare the number with those in the table below:

Microsoft Exchange Server	Version	
Microsoft Exchange Server	2010	14.0.639.21
Microsoft Exchange Server	2010 SP1	14.1.218.15
Microsoft Exchange Server	2010 SP2	14.2.247.5

# What Do You Need to Do?

You have time. The end of support deadline for Exchange Server 2010 is October 13, 2020.

A migration project can take time to plan and this is one project you do not want to push off. There are a number of considerations and decisions to make throughout the process.

## Upgrade to Exchange Online/Office 365

1

This is clearly the preferred option from Microsoft's end. From feature enhancements to price changes, the tech giant continues to push organizations off-premises and into the cloud suite. By upgrading to Office 365, you're guaranteed the latest version of Exchange in addition to all the functionality and applications without maintaining on-premises hardware.

## Upgrade to Exchange 2016/2019

2

Moving email to the cloud may not be possible for business reasons. By migrating to a newer instance of Exchange, your organization is still protected against the implications of an out-of-date server.



# Want to get started?



## Let's explore a modern workplace plan together.

If your organization is still using Exchange 2010, you are missing out on a host of functionalities in Exchange Online and Office 365 that have the potential to improve the way you work. This end-of-support cycle is the perfect change to let us help you navigate the changing technology landscape and introduce more holistic options to help you be more productive, collaborative, and secure.

The Velosio logo features the word "Velosio" in a bold, dark blue sans-serif font. A small registered trademark symbol (®) is located to the upper right of the letter 'o'. A small orange square is positioned above the letter 'i'.



## Move with confidence on your digital journey with Velosio

We deliver fresh ideas and unmatched know-how for cloud, ERP, CRM business intelligence, office automation and other business solutions.

- Fast-track results with rapid deployments methodologies
- Accelerate time to market with our industry expertise
- Enhance implementations with our services including development, support, and managed services

Velosio was created with the sole intent of serving our clients better than any other partner in our business. Our team is excited to help your organization succeed. We are committed to your business and value the opportunity to work with you.

**READY FOR A BREAK-THROUGH? CONTACT US TODAY!**

 888.725.2555

|  [info@velosio.com](mailto:info@velosio.com)